



# INDOFINE Chemical Company, Inc.

121 Stryker Lane, Bldg. 30, Suite 1 • Hillsborough, NJ 08844 • U.S.A.

Phone: (908) 359-6778 • FAX: (908) 359-1179

website: [www.indofinechemical.com](http://www.indofinechemical.com)

e-mail: [chemical@indofinechemical.com](mailto:chemical@indofinechemical.com)

## CERTIFICATE OF ANALYSIS

CAT. No.: 17-076

Product Name: **4-CHROMANONE**

CAS Number: [491-37-2]

Lot Number: 0802005

Chemical Formula: C<sub>9</sub>H<sub>8</sub>O<sub>2</sub>

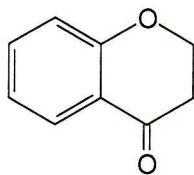
Molecular Weight: 148.16

Melting Point: 38-40°C

Appearance: Cream color crystalline low melting solid

Solubility: Soluble in Chloroform

Purity: 99%





# INDOFINE Chemical Company, Inc.

121 Stryker Lane, Bldg. 30, Suite 1 • Hillsborough, NJ 08844 • U.S.A.

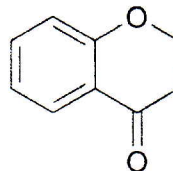
Phone: (908) 359-6778 • FAX: (908) 359-1179

website: [www.indofinechemical.com](http://www.indofinechemical.com)

e-mail: [chemical@indofinechemical.com](mailto:chemical@indofinechemical.com)

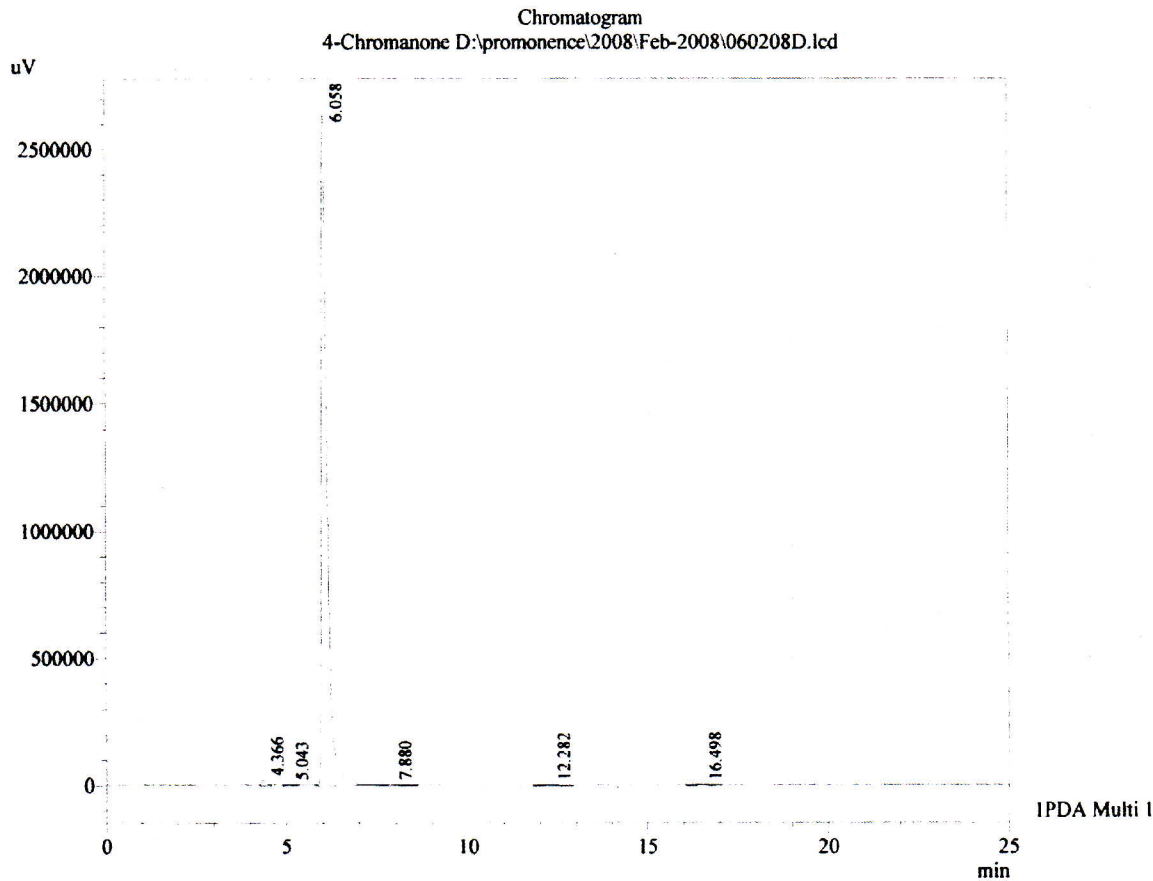
Catalog No.: 17-076  
Product: Chromanone  
Lot No.: 0802005

Date Acquired : 2/6/2008 11:06:19 AM  
Acquired by : Ramana  
Sample Name : 4-Chromanone  
Sample ID :  
Injection Volume : 20 uL  
Data Filename : 060208D.lcd  
Method Filename : Linear Isocratic.M.lcm



4-Chromanone

Description:  
Column : Gemini C-18, 250X4.6mm 5.0µm  
Flow : 1.000mL/min.  
Mobile Phase : A (50% Water 0.05% TFA) : B (50%ACN)



1 PDA Multi 1 / 254nm 4nm

PeakTable  
PDA Ch1 254nm 4nm

Peak#	Ret. Time	Area	Height	Area %
1	4.366	138611	20206	0.485
2	5.043	12324	1326	0.043
3	6.058	28304560	2634178	99.102
4	7.880	46323	3674	0.162
5	12.282	24050	899	0.084
6	16.498	35213	1458	0.123
Total		28561081	2661741	100.000



# INDOFINE Chemical Company, Inc.

121 Stryker Lane, Bldg. 30, Suite 1 • Hillsborough, NJ 08844 • U.S.A.

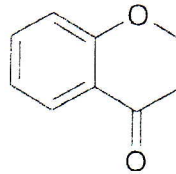
Phone: (908) 359-6778 • FAX: (908) 359-1179

website: [www.indofinechemical.com](http://www.indofinechemical.com)

e-mail: [chemical@indofinechemical.com](mailto:chemical@indofinechemical.com)

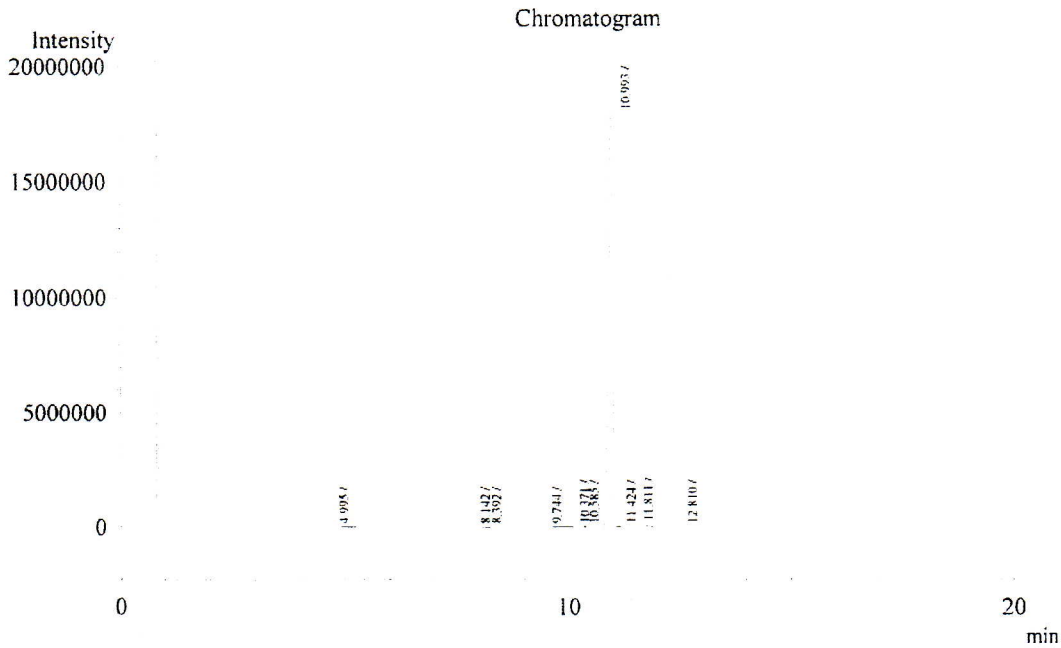
Catalog No.: 17-076  
Product: Chromanone  
Lot No.: 0802005

Analysis Date & Time : 2/5/2008 7:01:31 PM  
User Name : Ramana  
Sample Name : 4-Chromanone  
Sample ID :  
Method Name : D:\Methods\BRC Method.gcm  
Data File Name : D:\2008\Feb-2008\050208Q.gcd



4-Chromanone

Description  
Column : ZB-5  
Column Temp : 80(2) - 10 - 250(2)°C  
Inj Temp : 250°C  
Det Temp : 300°C



Peak Table - Channel 1

Peak#	Ret.Time	Area	Height	Area%
1	4.995	84434	8415	0.0785
2	8.142	39552	7568	0.0368
3	8.392	11183	1261	0.0104
4	9.744	34537	5309	0.0321
5	10.371	91492	15349	0.0851
6	10.585	17200	2366	0.0160
7	10.993	106683895	17998661	99.2211
8	11.424	32036	3673	0.0298
9	11.811	498626	101065	0.4637
10	12.810	28383	2827	0.0264
Total		107521338	18146494	100.0000